

CPAxxxx Digital Panel User Manual

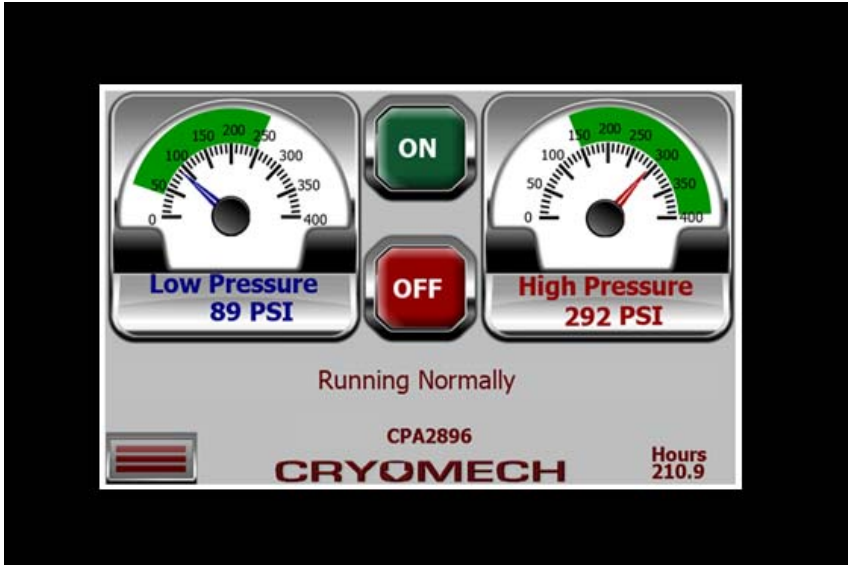


Table Of Contents

Screen Flow Diagram.....3

Status Menu Tab4

Status / Home5

Status / All Inputs6

Status / Schematic7

Status / Charts - Temps8

Status / Charts - Pressures.....9

Status / Events.....10

Status / Locked Outs11

Settings Menu Tab.....12

Settings / Date Time.....13

Settings / About14

Settings / Sensing Options15

Settings / Units of Measure.....16

Settings / Diagnostics.....17

Settings / User Options19

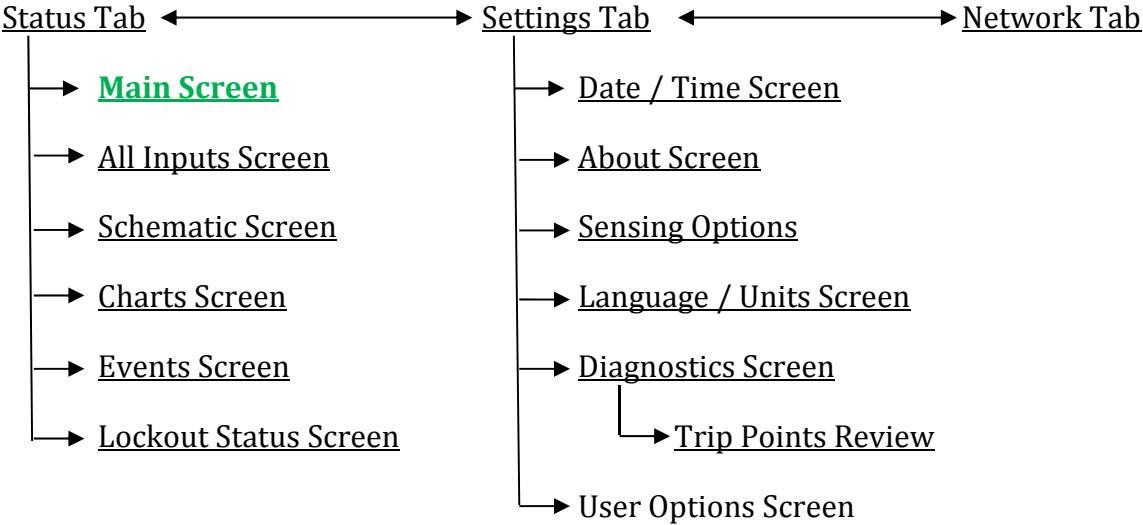
Networking Tab20

Communications Protocols.....21

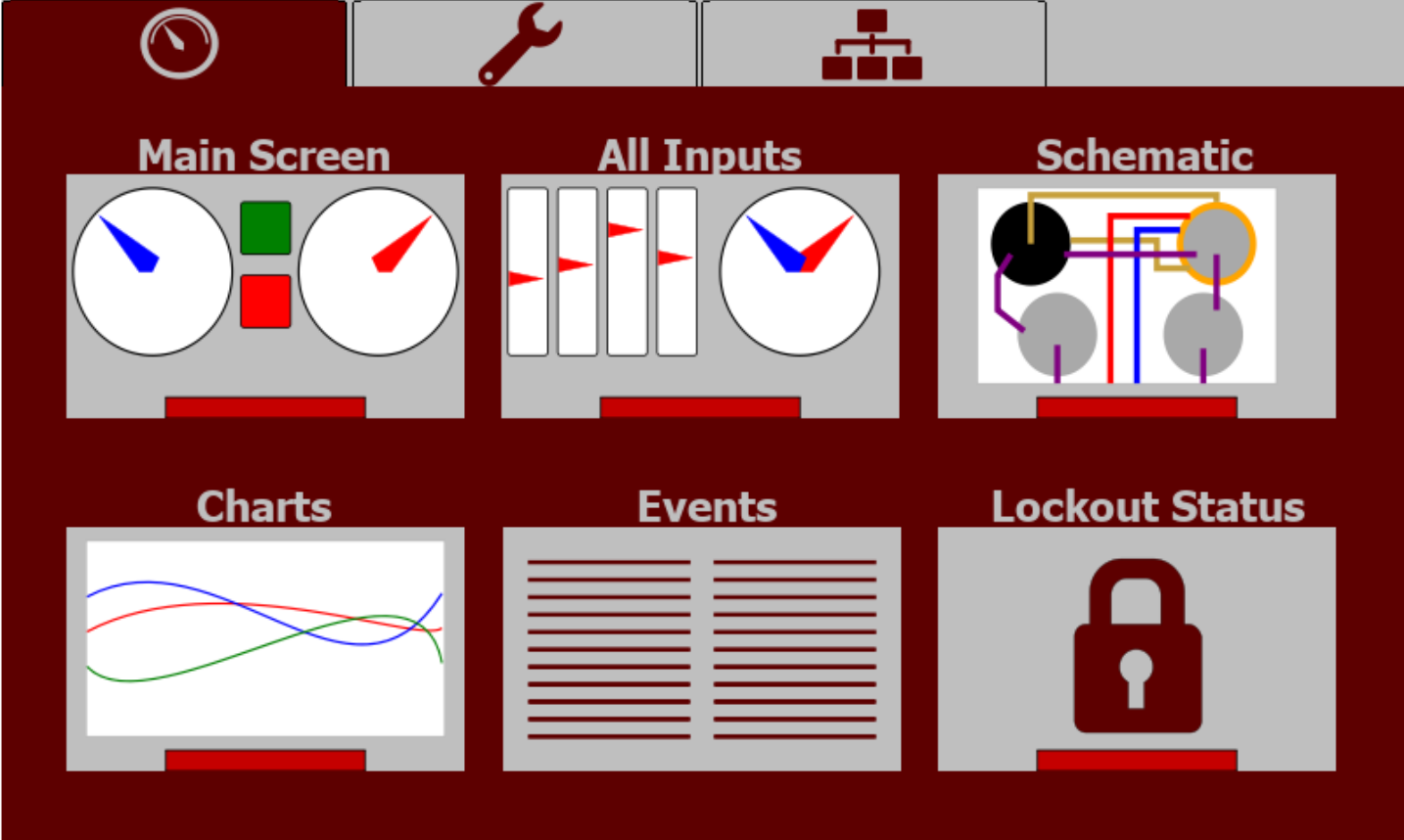
15 Pin Remote Control.....27

Screen Flow Diagram

This is a general flow diagram of the screens available. The green colored "Main Screen" is the default starting screen.



Status Menu Tab



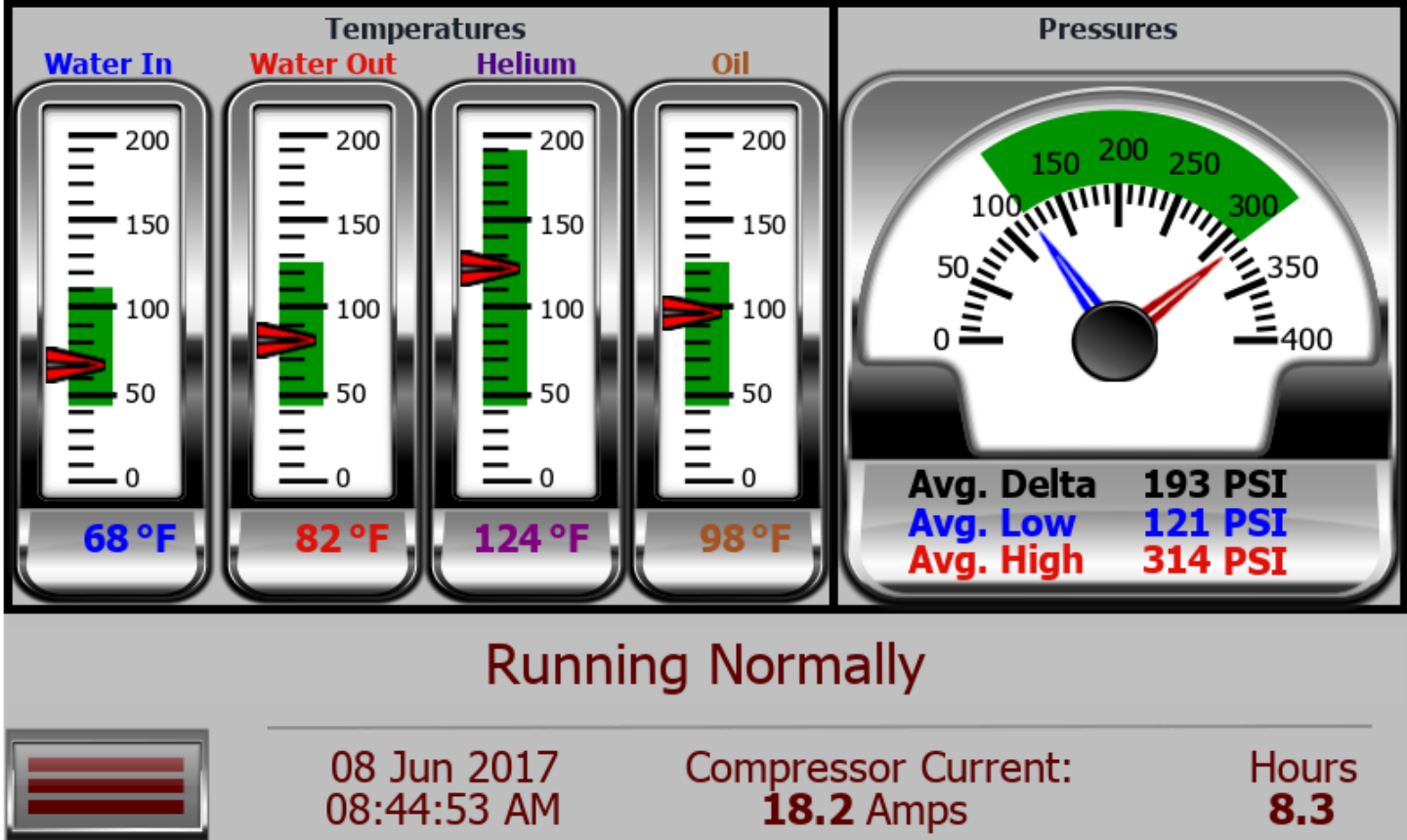
This screen allows the operator to navigate between various status screens or to adjacent menu screens.

Status / Home



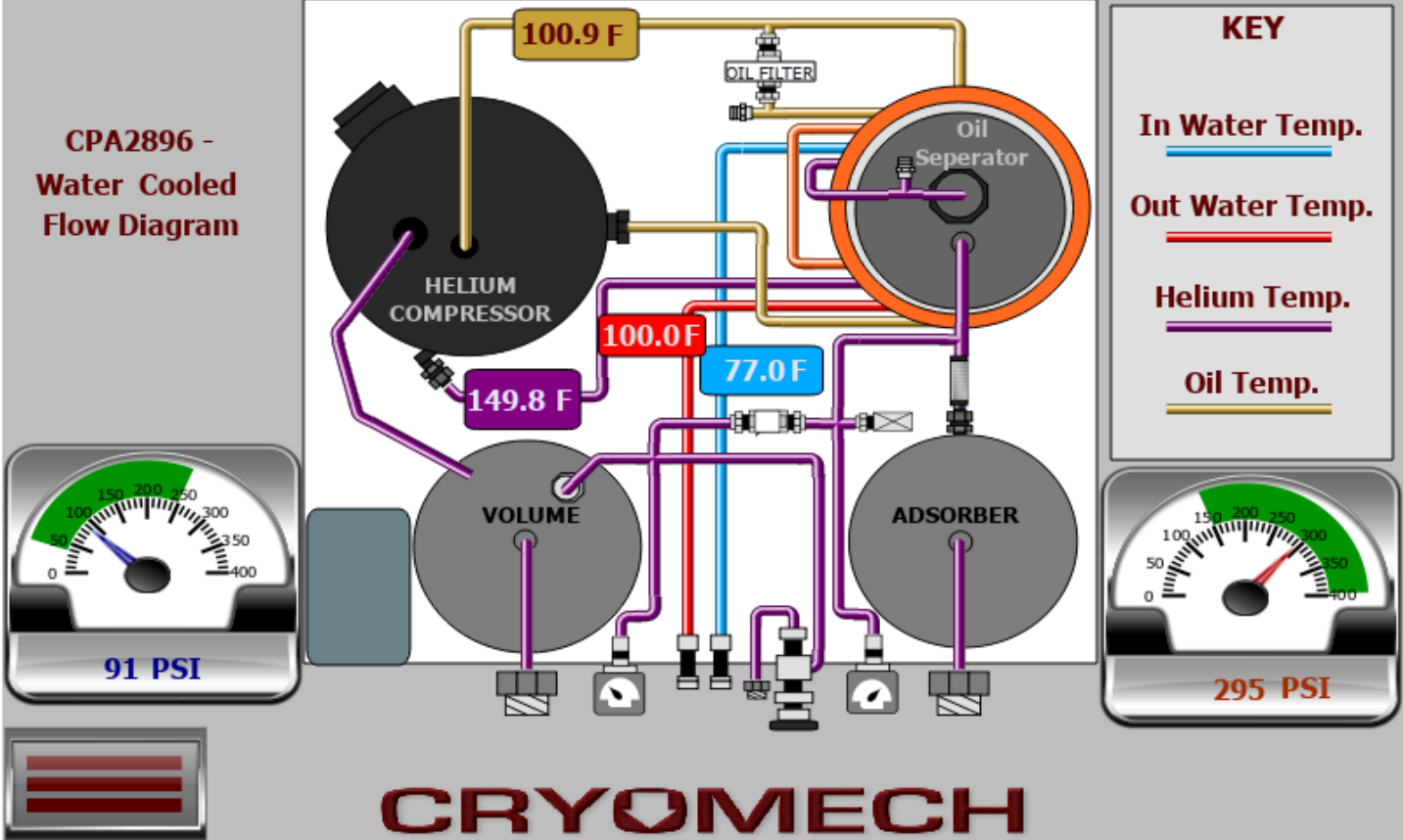
The "Home" screen is the default starting up screen. It is assumed that most facilities will have this screen up and running over the life of the compressor. The left dial indicates the low or gas input pressure and the right dial indicates the high or output pressure. Status about the running state of the compressor will be displayed on the Feedback Label. The bottom right Hours number tracks the total hours of operation the compressor has been running.

Status / All Inputs



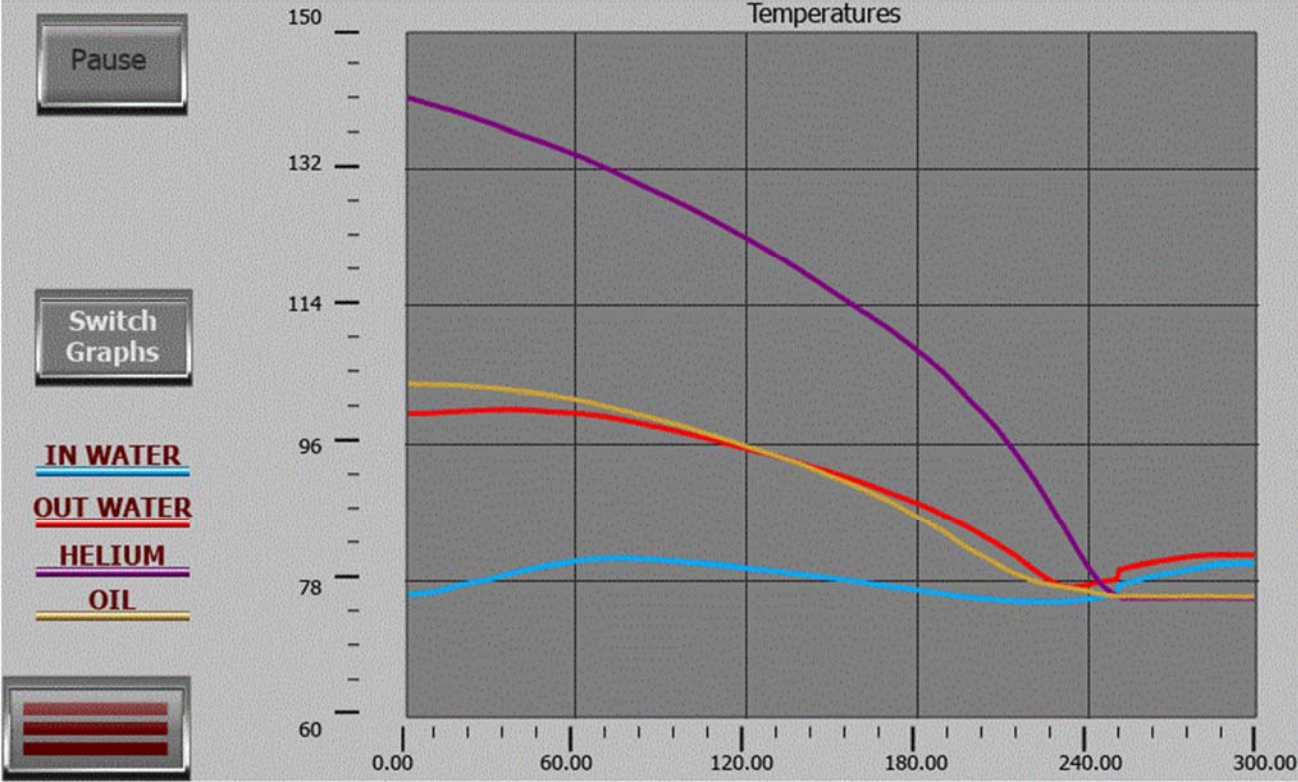
The "All Inputs" screen is designed to give the user a complete picture of all the temperatures and pressures being monitored by the system. The Coolant In & Out gauges will have the word "Water" or "Air" depending on the system attached. The gauge on the right has two needles to indicate both the "Low" or inlet pressure and the "High" or outlet pressure. Bottom middle indicates the current draw on a single leg of the three-phase power used to run the compressor motor. This reading isn't to show over all power consumption, merely to monitor if the motor is failing and not drawing any current. Note that other circuitry in the system draws power from this phase so when the system is idling it will show a low amount of power use. The averaging is from data over a 20 second period.

Status / Schematic



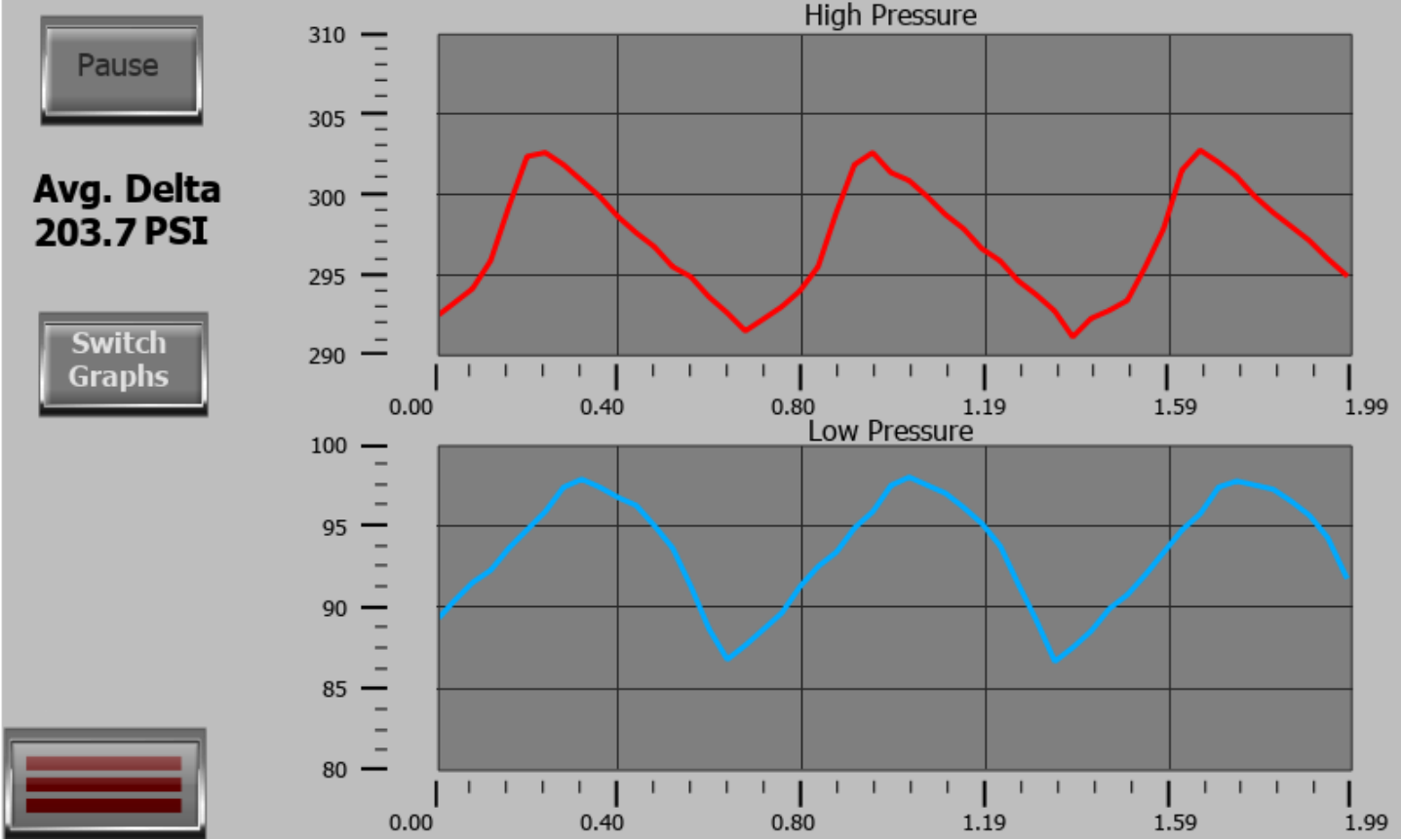
The "Schematic" screen is designed to give the general idea of how all the components are connected. It also indicates the current temperature readings for the various parts of the system. To the left and right of the schematic are the "Low" or Inlet and "High" or outlet pressures.

Status / Charts - Temps



The charts screen has two modes. One is the temps reading mode and the alternate is pressure monitoring. When the temps mode is selected the time span is 5 minutes. Temp data is collected in 1 second intervals and is displayed with the newest data on the right hand side of the chart. The scales will auto adjust based on the data displayed.

Status / Charts - Pressures



The pressure monitoring mode has a time span of 2 seconds. The high and low pressures scales are independent and auto adjust based on captured data. A pause button is provided to allow closer examination of the charts.

Status / Events


27 - 07:26:08 — Running
27 - 07:26:05 — Starting
27 - 07:26:05 — Recover From Power Loss
—
—
—
—
—
—
—
—
—
—
—

CRYOMECH

The "Events" is an event logging window. It will hold up to 200 events but will not retain the events if there is a power loss. The format of the time stamping is Day - Time.

Status / Locked Outs

Lockouts	
24 Supply:	0
3 Phase Power:	0
Low Motor Current:	0
Low Pressure - High:	0
Low Pressure - Low:	0
High Pressure - High:	0
High Pressure - Low:	0
Delta Pressure - High:	0
Delta Pressure - Low:	0
Coolant In - High:	0
Coolant In - Low:	0
Coolant Out - High:	0
Coolant Out - Low:	0
Oil Temp - High:	0
Oil Temp - Low:	0
Helium Temp - High:	0
Helium Temp - Low:	0

 **CRYOMECH**

If the compressor experiences 6 or more errors in under an hour, it will shut down and begin a cooling timer. This screen will show you what issues have occurred over the last hour.

Settings Menu Tab



Settings / Date Time




A small date / time setting system window will appear over this window. If you do not see it, click on the Show Date Time Window button.

Settings / About

CRYOMECH
315 - 455 - 2555
support@cryomech.com

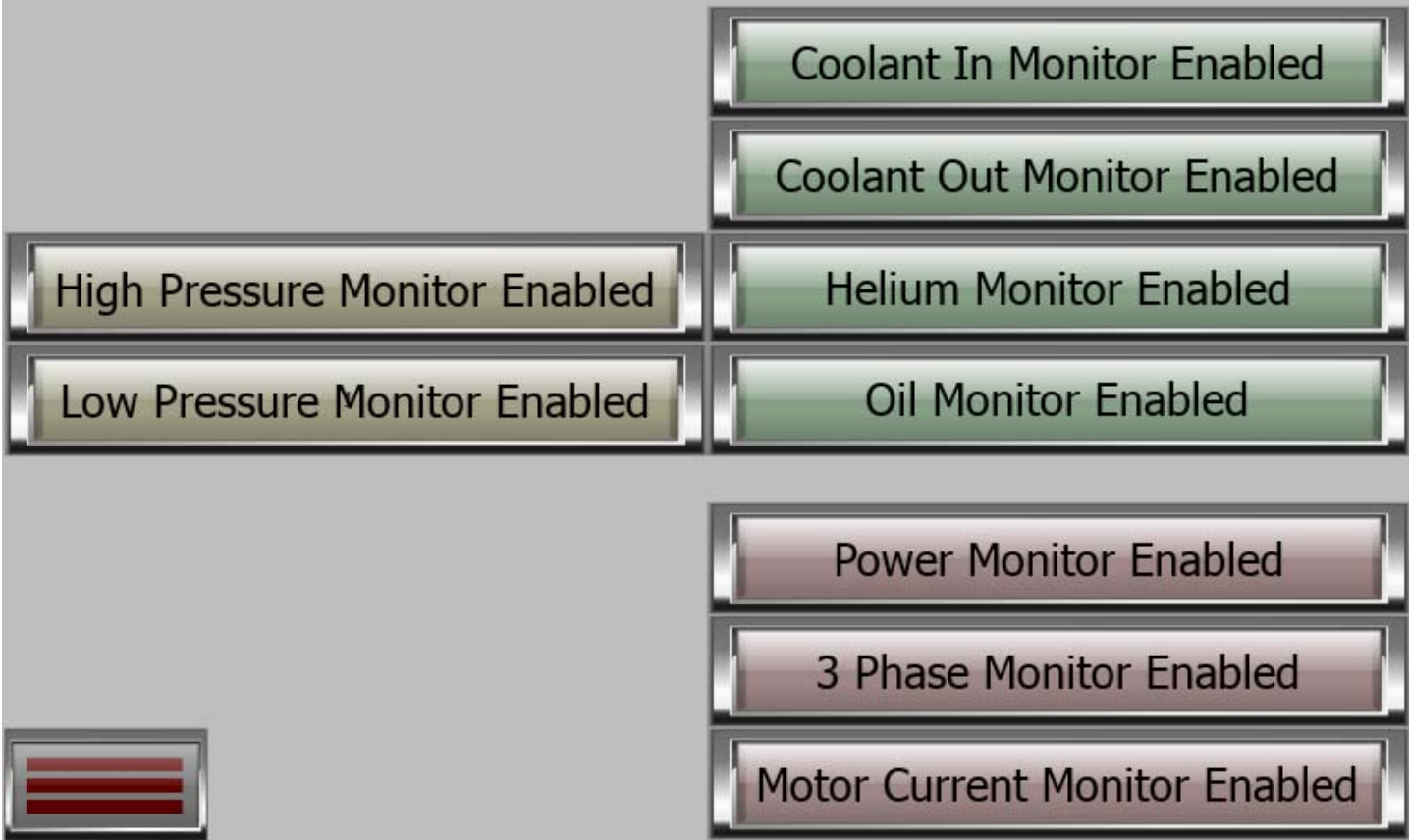
CODESYS V3.5 SP4+ Copyright 1994-2013 3S-Smart Software Solutions. GmbH
Jmobile & Exor International S.p.A Version: 2.0 (0) - Build (265)
Main OS Version: UN31HSXX60M0196
Cryomech Software Version: 2.122
Compressor SN: TESTBOXW5JA-790105A
Panel SN: 100
Hours Of Operation: 8.3

Running Normally



All pertinent version info is stored here.

Settings / Sensing Options



This screen allows the operator to disable a single sensor, the sensor may be ignored allowing the compressor to run until such time that the sensor can be replaced.

Settings / Units of Measure



The "Unit of Measures" screen is used to set what sorts of units we wish to display on the screen. For temperature, you can select between Celsius, Fahrenheit or Kelvin. For pressure, you can select between PSI, BAR & KPSA. Selecting here will affect most other screens.

Settings / Diagnostics

15 Pin Connection In SLVL: <input type="text" value="Open"/> On: <input type="text" value="Open"/> Off: <input type="text" value="Open"/> Interlock: <input type="text" value="Open"/> State: <input type="text" value="Disconnected"/> 15 Pin Connection Out Unit Good: <input type="text" value="Closed"/> High Temp: <input type="text" value="Open"/> High Press: <input type="text" value="Open"/> Running: <input type="text" value="Closed"/>	Inputs High Press: <input type="text" value="314"/> Low Press: <input type="text" value="121"/> Coolant In: <input type="text" value="68"/> Coolant Out: <input type="text" value="82"/> Helium: <input type="text" value="124"/> Oil: <input type="text" value="98"/> Power: <input type="text" value="Good"/> 3 Phase: <input type="text" value="Good"/> Amps: <input type="text" value="18.2"/> <input type="button" value="Review Trip Points"/>	Outputs Cold Head Relay: <input type="text" value="Closed"/> Compressor Enable: <input type="text" value="Closed"/> Inverter Enable: <input type="text" value="Open"/> Local Buttons On Button: <input type="text" value="Open"/> Off Button: <input type="text" value="Open"/> Cold Head <input type="button" value="Spin The Cold Head"/> Cold Head RPM: <input type="text" value="0.0"/>
--	---	---

Running Normally
Testbox
CRYOMECH

DATE 08 Jun 2017
TIME 09:03:52 AM

The diagnostics screen is used to indicate the status of the different digital inputs and outputs. This screen is useful for diagnosing running issues if they arise. If you click on the Review Trip Points button the next screen will appear allowing the operator to review what temperatures and pressures this system will alarm at.

Settings / Diagnostics/Trip Points

Coolant In Temp °F		Coolant Out Temp °F	
High Alarm:	110	High Alarm:	125
High Warn:	85	High Warn:	120
Low Warn:	45	Low Warn:	45
Low Alarm:	40	Low Alarm:	40

Oil Temp °F		Helium Temp °F	
High Alarm:	125	High Alarm:	190
High Warn:	120	High Warn:	170
Low Warn:	45	Low Warn:	45
Low Alarm:	40	Low Alarm:	40

Motor Current Amps	
Low Alarm:	5

Low Pressure Line PSI	
High Alarm:	250
High Warn:	240
Low Warn:	40
Low Alarm:	35

High Pressure Line PSI	
High Alarm:	400
High Warn:	375
Low Warn:	170
Low Alarm:	150

Delta Pressure Line PSI	
High Alarm:	300
High Warn:	290
Low Warn:	75
Low Alarm:	50



Settings / User Options

User name:




Password:

Show password

CRYOMECH

Different operator levels provide access to special features. The general user should be logged in as "user" with no password.

Networking Tab

			
Gateway:	<input type="text" value="0.0.0.0"/>		
I.P. Address:	<input type="text" value="192.168.0.105"/>		
MAC ID:	<input type="text" value="AC:E0:10:AA:33:D9"/>		
Subnet Mask:	<input type="text" value="255.0.0.0"/>		
COM1: RS-232		COM2: RS-485	
Baud:	<input type="text" value="115200"/>	Baud:	<input type="text" value="115200"/>
Parity:	<input type="text" value="None"/>	Parity:	<input type="text" value="None"/>
Stop Bits:	<input type="text" value="1"/>	Stop Bits:	<input type="text" value="1"/>
Node ID:	<input type="text" value="0"/>	Node ID:	<input type="text" value="0"/>
<input type="button" value="Click To Save Serial Settings"/>		<input type="button" value="Click To Save Serial Settings"/>	

This page shows the IP data that gets assigned to the device by its network. By connecting to the compressor via serial port or by Ethernet it is possible to remotely monitor and operate the compressor. Compressors with a single DB-9 port only support RS-232. Compressors with two DB-9 ports also provide an RS-485 port.

Communications Protocols

The serial port uses Modbus RTU protocol and the Ethernet port uses ModbusTCP. More information about these protocols can be found here:

http://modbus.org/docs/PI_MBUS_300.pdf

The registers used for this protocol are as follows:

- 30,001 - Operating State
- 30,002 - Compressor Running
- 30,003 - Warning State
- 30,005 - Alarm State
- 30,007 - Coolant In Temp
- 30,009 - Coolant Out Temp
- 30,011 - Oil Temp
- 30,013 - Helium Temp
- 30,015 - Low Pressure
- 30,017 - Low Pressure Average
- 30,019 - High Pressure
- 30,021 - High Pressure Average
- 30,023 - Delta Pressure Average
- 30,025 - Motor Current
- 30,027 - Hours Of Operation
- 30,029 - Pressure Scale
- 30,030 - Temp Scale
- 30,031 - Panel Serial Number
- 30,032 - Model Major + Minor numbers
- 30,033 - Software Rev
- 40,001 - Enable / Disable the compressor

The first two 'Input' registers and the only 'Holding' register are 16 bit integer registers and the rest of the input registers are in 32bit floating point format. The PLC code is written in Structured Text and the data stored is a REAL value. This means two Input registers are used to hold the value and the bytes will have to be rearranged before

converting them to floating format on the system. Below is a sample of C# code that successfully converts one of the registers to a floating-point value. The Holding register 40,001 is used to signal the compressor to turn on and off.

```
byte[] data = (data returned)
byte[] arbyWorker = new byte[4];

arbyWorker[3] = data[2];
arbyWorker[2] = data[3];
arbyWorker[1] = data[0];
arbyWorker[0] = data[1];

float myFloat = BitConverter.ToSingle(arbyWorker, 0);
```

Values To Use:

Holding register 40001:

0x00FF - turn the compressor OFF

0x0001-Turn the compressor ON

Input Register 30001: (operating state)

0: Idling - ready to start

2: Starting

3: Running

5: Stopping

6: Error Lockout

7: Error

8: Helium Cool Down

9: Power related Error

15: Recovered from Error

Input Register 30002: (Compressor Energized)

0: Off

1: On

Input Register 30003: (Warnings)

0: No warnings

-1: Coolant IN running High

-2: Coolant IN running Low

-4: Coolant OUT running High

-8: Coolant OUT running Low

-16: Oil running High

-32: Oil running Low

-64: Helium running High

-128: Helium running Low

-256: Low Pressure running High

-512: Low Pressure running Low

-1024: High Pressure running High

-2048: High Pressure running Low

-4096: Delta Pressure running High

-8192: Delta Pressure running Low

-131072: Static Pressure running High

-262144: Static Pressure running Low

-524288: Cold head motor Stall

Input Register 30004: (Errors)

0: No Errors

-1: Coolant IN High

-2: Coolant IN Low

-4: Coolant OUT High

-8: Coolant OUT Low

-16: Oil High

-32: Oil Low

-64: Helium High

-128: Helium Low

-256: Low Pressure High

-512: Low Pressure Low

-1024: High Pressure High

-2048: High Pressure Low

-4096: Delta Pressure High

-8192: Delta Pressure Low

-16384: Motor Current Low

-32768: Three Phase Error

-65536: Power Supply Error

-131072: Static Pressure High

-262144: Static Pressure Low

Input Register 30029: (Pressure)

0: PSI

1: Bar

2: KPA

Input Register 30030: (Temperature)

0: Fahrenheit

1: Celsius

2: Kelvin

Input Register 30032: Model Numbers

The upper 8 bits contain the Major model number and the lower 8 bits contain the Minor model number.

Major Model Numbers consist of

- 1: 800 Series
- 2: 900 Series
- 3: 1000 Series
- 4: 1100 Series
- 5: 2800 Series

Minor Model Numbers consist of:

- | | |
|--------|--------|
| 1: A1 | 13: 07 |
| 2: 01 | 14: H7 |
| 3: 02 | 15: I7 |
| 4: 03 | 16: 08 |
| 5: H3 | 17: 09 |
| 6: I3 | 18: 9C |
| 7: 04 | 19: 10 |
| 8: H4 | 20: 1I |
| 9: 05 | 21: 11 |
| 10: H5 | 22: 12 |
| 11: I6 | 23: 13 |
| 12: 06 | 24: 14 |

Example: A 289C compressor will give a Major of 5 and a Minor of 18.

15 Pin Remote Control

The 15 pin control port documentation is available on request.